

PASSWORD MANAGER > AUTOFILL >

# Autofill Cards & Identities

View in the help center:

<https://bitwarden.com/help/auto-fill-card-id/>

## Autofill Cards & Identities

Bitwarden can do more than just [autofill your usernames and passwords](#)! Bitwarden browser extensions can autofill [cards](#) and [identities](#) to simplify online purchases, account creation, and more.

### Note

Currently, autofill for cards & identities is only available for browser extensions. Mobile platforms including Android and iOS do not currently support this type of autofill function.

## Set up card & identity autofill

You can add or remove cards from your autofill suggestions and from the inline autofill menu using four settings found in the **Settings** → **Autofill** menu:

- **Display identities as suggestions:** Include identities in the inline autofill menu. This requires the **Show autofill suggestions on form fields** option to be on.
- **Display cards and suggestions:** Include cards in the inline autofill menu. This requires the **Show autofill suggestions on form fields** option to be on.
- **Always show cards as Autofill suggestions on Vault view:** Include cards in the suggestions located in the Vault view. These can be autofilled using the **Fill** button.
- **Always show identities as Autofill suggestions on Vault view:** Include identities in the suggestions located in the Vault view. These can be autofilled using the **Fill** button.

## Autofilling cards & identities

### Using the inline menu

To enable card and identity autofill using the inline autofill menu, turn on the **Display identities as suggestions** and **Display cards as suggestions** options as described in the previous section. The **Show autofill suggestions on form fields** option must also be turned on.

Once on, your stored cards and identities will be listed when you click on a form. Select the card or identity you wish to use when filling out a form information:

## Credit Card

Name on card	<input type="text"/>
Type	<div> <div>VISA</div> <div>Marketing CC</div> <div> <div> <div></div> <div></div> <div></div> </div> </div> </div> <div> <div> <div></div> <div></div> <div></div> </div> </div>
Credit card number	<input type="text"/>
CVV	<input type="text"/>
Expiry month	<div>01</div> <div></div>
Expiry year	<div>2020</div> <div></div>

Pay

Inline Autofill Card

### Note

If you do not have a card or identity saved in your Bitwarden vault, you may select + **New Card / New identity** from the inline menu after filling out the information to save the new item in your Bitwarden vault.

### Using the Fill button

To autofill a card or identity using the **Fill** button, turn on the **Show cards as Autofill suggestions on Vault view** and **Show identities as Autofill suggestions on Vault view** options as described in the previous section.

Once on, your cards and identities will be available in the **Autofill suggestions** section of the **Vault** view. Select the **Fill** button to autofill:

# Vault

+ New



Search



Vault



Collection



Type



## Autofill suggestions

2

Save a login item for this site to autofill

### Cards



Credit

Visa, \*1234

Fill



### Identities



Passport

John Smith

Fill



## All items

9

**Vault****Generator****Send****Settings**

Fill Card and Identities

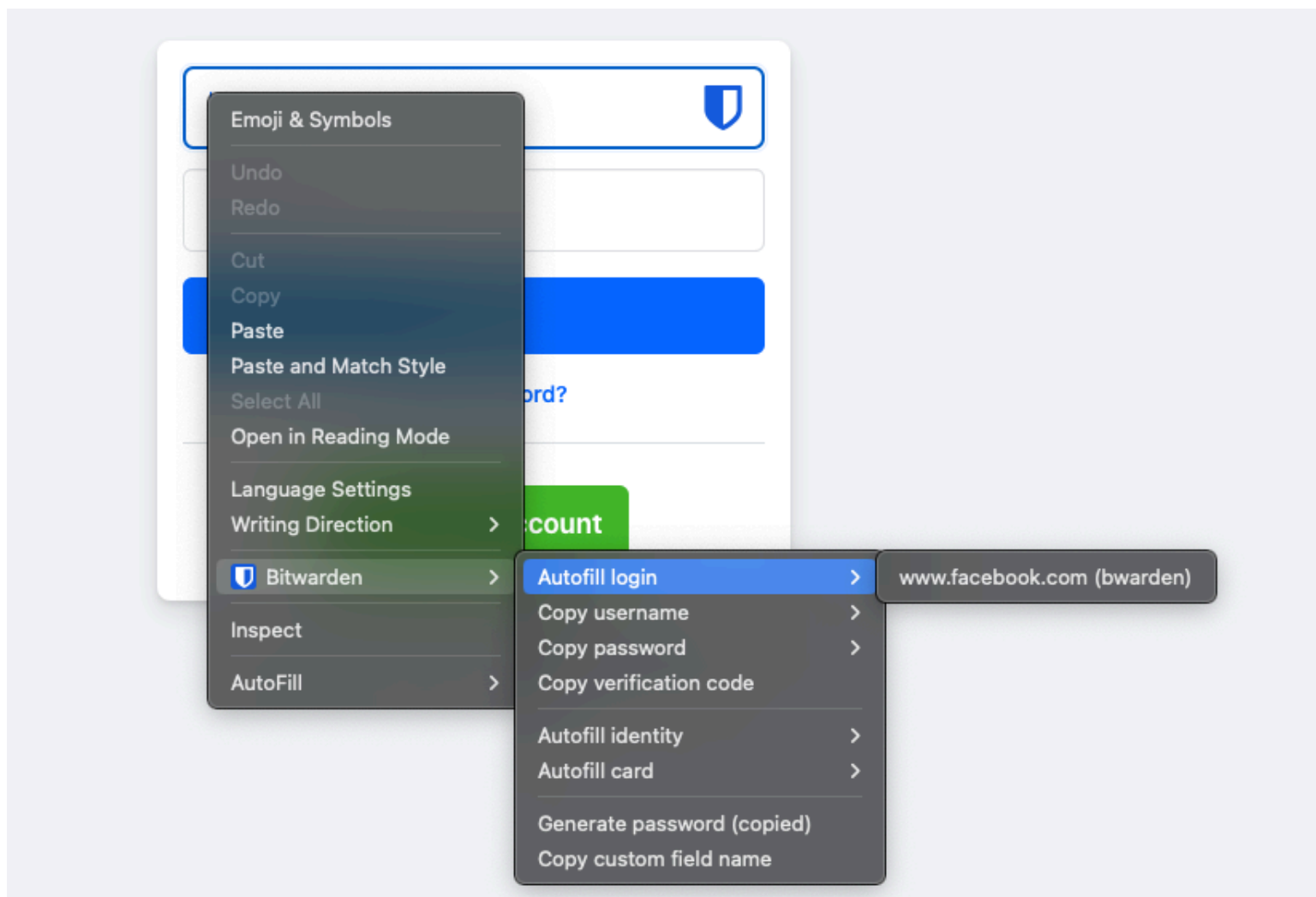
The browser extension will find any fields on the web page that map to card or identity information and autofill them.

## Using the context menu

### Note

Currently unavailable in the Safari browser extension.


Without opening your browser extension, you can autofill cards and identities by right-clicking on an input field and using the **Bitwarden** → **Autofill** option. If your vault is locked when you attempt this, a window will open prompting you to unlock. Once unlocked, the browser extension will automatically proceed with autofilling your information.



Browser Extension Context Menu

## Using keyboard shortcuts

Cards and Identities can be autofilled using keyboard shortcuts. To use this feature, keyboard shortcuts must be manually set for cards and identities:

1. Open the Bitwarden browser extension and select  **Settings**.
2. Select **Autofill** from the settings menu and then **Manage shortcuts** to open your browsers autofill settings window.
3. In the Bitwarden Password Manager keyboard shortcuts, configure keyboard shortcuts you would like to use for **Autofill the last used card for the current website** and **Autofill the last used identity for the current website**.